



Bathing establishment Fact Sheet

Bathhouse name	CHIMERA
Address	Lungomare Roma 21
City	Marina di Pietrasanta
Contacts	+39 058421850 Email: info@bagnochimera.it
Website	www.bagnochimera.it/en

TESTED BY: [Handy Superabile - Social Promotion Association](#) in summer 2023

Please note The following information refers to the verification date shown at the bottom of each card. **The Association** is not responsible for any significant changes made by the property after the visit.

Summary

Bathing establishment Fact Sheet	1
Arrival at the facility.....	2
Private/public parking.....	2
Pathway from the parking lot to the main entrance	2
Reception.....	3
Bar/restaurant	4
Internal Pathways and common services.....	5
Internal Pathways	5
Toilet and shower accessible to guests with reduced mobility	5
Changing room	7
Beach.....	7
Children's play area	8
Swimming pool	9
Doctors' Offices/Healthcare Facilities	9


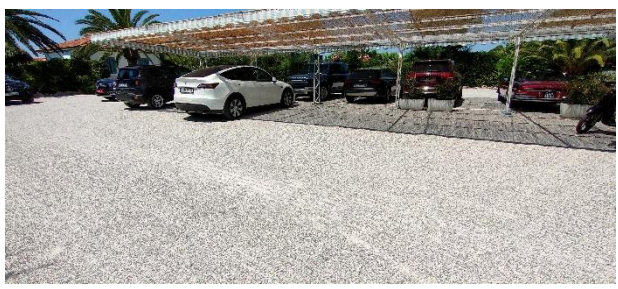
Project carried out with the contribution of the





Arrival at the facility

Private/public parking



Presence of private parking	YES
Presence of parking space reserved for people with disabilities	NO
Type of parking surface	GRAVEL
Public parking nearby	YES
	
	

Pathway from the parking lot to the main entrance

Pathway from the car park to the entrance	flat on a gravel surface that can make it difficult for wheelchair users to move around
There are markers and tactile maps	NO





Usable door/entrance width	more than 90 cm
	


Reception

Umbrella booking system	<input type="checkbox"/> Via web <input checked="" type="checkbox"/> By phone <input checked="" type="checkbox"/> On-site
Presence of multilingual staff	YES
Presence of plant plan with key to services available	NO
Presence of visuo-tactile map	NO
Bulletin board/information panels at an average height of 130 cm in a well-lit area and font size at least 14 dpi with a contrast ratio greater than 4.5:1	NO
The staff attended training courses on welcoming people with different disabilities	NO





Bar/restaurant

Type of venue	Snack bar
Access to the premises	Flat
Usable door/entrance width	more than 90 cm
Bar counter	height greater than 100 cm
Types of tables	4-legged
Space underneath the tables from the floor	60 cm
Multilingual menu	Not detected
Menus with large print fonts	Not detected
Braille menu	NO
Table service for people with disabilities	YES
Availability of gluten-free food	<input type="checkbox"/> bread <input type="checkbox"/> pasta <input type="checkbox"/> biscuits <input type="checkbox"/> ice cream <input type="checkbox"/> Pre-packaged foods
	



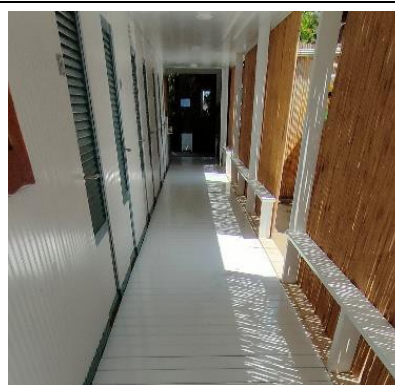
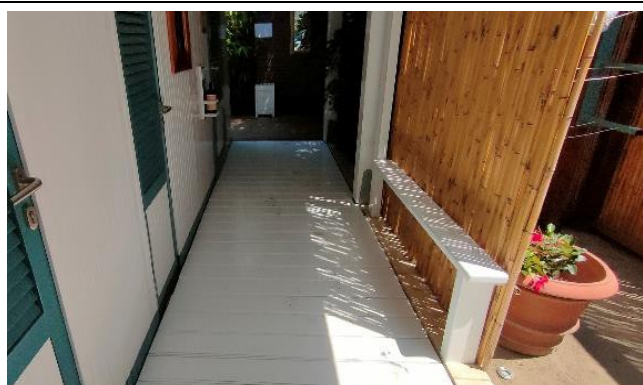


Internal Pathways and common services

Internal Pathways

Indicate whether the pathways connecting the entrance to the beach are flat or with ramps in addition to those already described

Flat paths






Toilet and shower accessible to guests with reduced mobility

Number of toilets accessible/usable by guests with reduced mobility	1
Access to the premises	Flat
Usable width of the entrance door	80 cm

Project carried out with the contribution of the






Toilet height	49 cm
Open front toilet seat	NO
Flexible hand shower at the side of the toilet	NO
Free space on the sides of the toilet	left 81 cm right 23 cm front 81 cm
Electric doorbell/phone	NO
Washbasin with space underneath for wheelchair	61 cm
Height from the ground on the bottom edge of the mirror	not sufficient for use by a person in a wheelchair
Baby changing table	YES
	
	
Accessible shower available for guests with reduced mobility	SI separated from the toilet room





Access to the shower room if separated from the toilet room	Flat
Useful width of the door/entrance gate if separated from the toilet room	Outdoors
Shower type	open-type
Floor-level shower	YES
Shower chair	missing
Grab bar	NO
Presence of shower head or ups and downs	fixed shower head
Electric doorbell/phone	NO
	

Changing room





Accessible changing room available for guests with reduced mobility	NO
---	----

Beach

Type of beach	sand
Access to the beach	Flat
Walkway to reach the umbrellas	YES
Type of walkway	wooden





Walkway width	100 cm
	
	
Removable Platform between the walkway and the umbrella station to facilitate the passage and parking wheelchair	YES
Amphibious beach chair available for helping people with reduced mobility to enjoy swimming (owned by the establishment or by association)	YES

Children's play area

Children's play area	missing
----------------------	---------





Swimming pool

The property has a swimming pool	NO
----------------------------------	----

Doctors' Offices/Healthcare Facilities

Hospitals near the facility	Ospedale Versilia SS 1, 335, 55049 Camaione LU Telephone: 0584 6051
Other Healthcare Facilities	Distretto Sanitario ASL 12 Pietrasanta Via Martiri S. Anna 11 Tel. 05846058823 Croce Verde Via Risorgimento, 1 Forte dei Marmi Tel. 058484013 free dialysis and first aid service for white codes Emergency medical service Via Martiri S. Anna Tel. 0584 616774 Misericordia Via Mazzini Pietrasanta Tel. 058470055 Medical service "San Camillo" Nursing Home Via P.I. da Carrara, 37 Tel. 0584 7391 Dialysis service c/o Croce Verde Viale Italico at the corner of Via Risorgimento Forte dei Marmi Tel. 058484013 affiliated with AUSL

TESTED BY: **Handy Superabile Social Promotion Association in summer 2023**

